

Monica

Biosecurity

Family Discussion Guide

EYFP



Vocabulary Alert!

Farmers take the health and safety of their crops and livestock very seriously. **Biosecurity protocols** (say “bye-oh-seh-cure-it-ee pro-toe-calls”) are steps that help protect plants and animals from diseases.

At many farms, **biosecurity protocols** limit visitors and make them sign in. Farms also use special clothing, like coveralls and booties, to keep germs from accidentally spreading. Hand washing is another very important way to keep people and animals safe on the farm.

Learn more about **biosecurity protocols** in this article from NC Cooperative Extension in Robeson County at go.ncsu.edu/robeson or visit the University of Vermont’s biosecurity training modules for youth, available at www.healthyagriculture.org.

These are some sample questions for Episode 3. Use the ones that seem helpful or interesting. You may have your own questions as well.

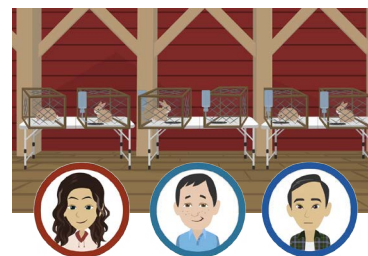
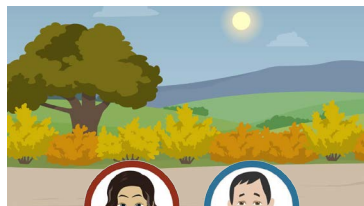
Opening

“Jumping to conclusions” means making up your mind or making assumptions before you have all the facts. Have you ever felt like someone jumped to conclusions and made assumptions about you?

As you watch the video, keep track of times when characters “jump to conclusions.”

Part 1: Jumping to Conclusions

Talk about times a character might have jumped to conclusions in each of these scenes.



How did you decide if a character jumped to conclusions?

Continued

Part 2: Discussion Questions

- In Scene 1, Monica jumped to conclusions about Cameron. What did she assume about his family? Why do you think she made that assumption?
- How did Cameron react when Monica jumped to conclusions about his family? Why do you think he reacted that way?
- In Scene 2, Dad jumps to conclusions about Monica. What did he assume about her? Why do you think he made that assumption?
- Think about the times you discussed in Part 1. What were some of the assumptions that the characters made? What were some of the reactions you noticed?
- Were any of the assumptions fair or justified? Explain.
- When, if ever, do you think it would be fair to make assumptions about others? Explain.
- What are some steps your family can take to avoid making unfair assumptions?



Family Fun!

Is it time to eat? Fill in the missing letter to find out. **I am no_ hungry.**

In the puzzle, did you assume the missing letter was a t or a w, or did you come up with a different letter that made sense? What might have influenced your guess? What other clues would you need to make a better decision?

Our brains use patterns to help make decisions. This can be very helpful sometimes, like when you need to know if the long, skinny thing on the ground is a snake or a stick. However, our brains can also get us in trouble by assuming that something is part of a pattern. Sometimes, we need to slow down and think beyond our first conclusions.

You can practice slowing down your brain by making a secret code. Visit go.ncsu.edu/exploratorium to learn how. Write notes to family members using your family's secret code.